



The Educational Research Alliance of Northern Virginia at George Mason University: ERA.NOVA

March 27, 2025



Welcome!

Meeting Agenda

- Welcome
- ERA.NOVA's Shared Purpose
- Understanding the Current Landscape of Secondary Literacy
- Looking Ahead

Our Mission: ERA.NOVA

Educational Research Alliance of Northern Virginia (ERA.NOVA) is dedicated to harnessing our collective resources to address key challenges in our region and measurably contribute to improved conditions for the education community, and in turn, to equitably impact the quality of life for students, families, and our shared society.

ERA.NOVA Overview

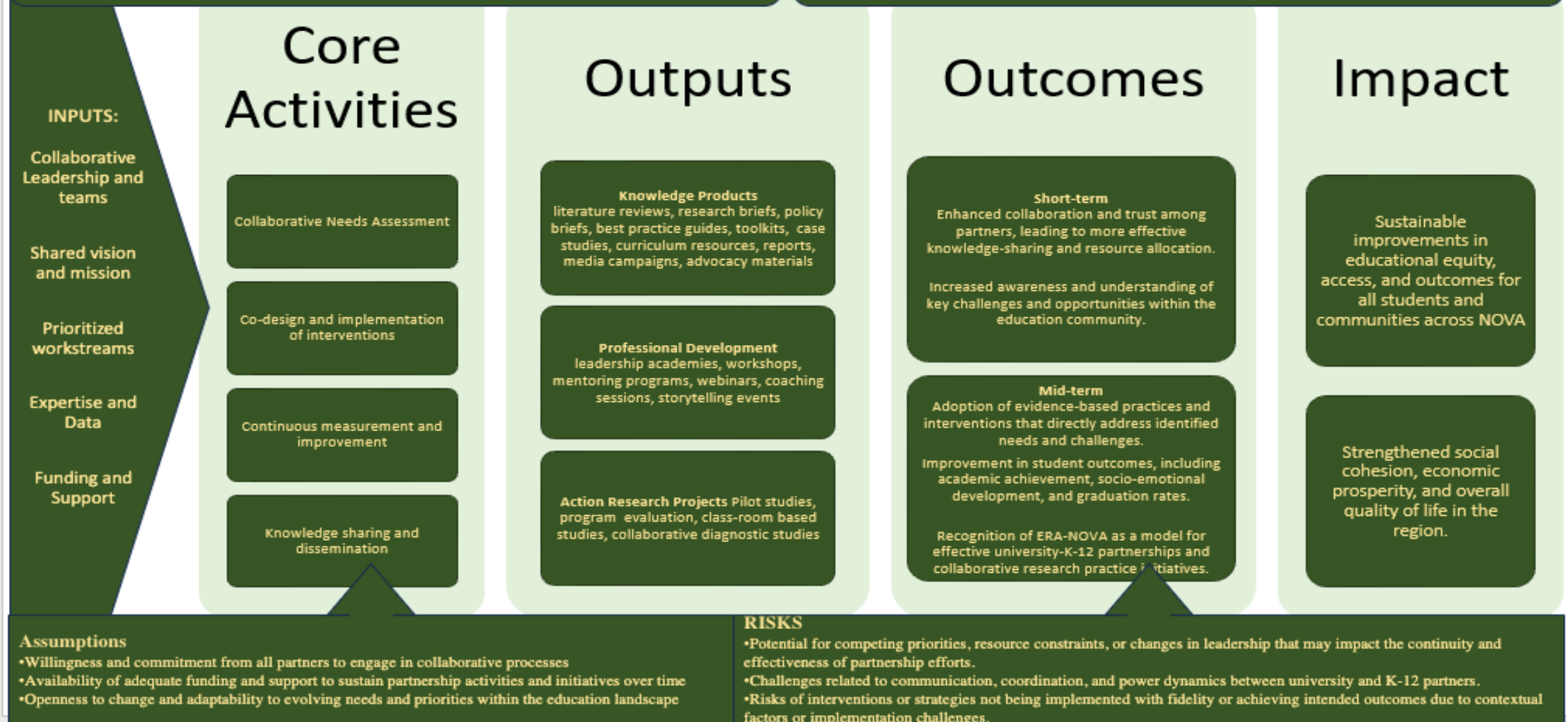
Purposeful Collaboration through a Research Practice Partnership

- Focused on **consequential research** driven by **problems of practice** - i.e., actionable and timely research that the school systems can use
 - Consider the complexity of **real-world educational issues**, centered on people and community needs
- Engage **diverse forms of expertise and perspectives**, across practitioners, scholars, and organizations, around pressing problems of practice and/or policy.
 - School systems as **co-creators** and collaborators of action research with university colleagues
- **Share insights** into the processes, practices, and policies that improve education for learners, educators, families, communities, and institutions
 - **Transformational, not transactional** processes and outputs

ERA.NOVA Theory of Change Framework

Mission: ERA-NOVA at George Mason University is dedicated to harnessing our collective resources to address key challenges in our region and measurably contribute to improved conditions for the education community, and in turn, to equitably impact the quality of life for students, families, and our shared society.

Vision: Cultivate a collaborative ecosystem where university and K-12 partners work together to address pressing challenges in education, leading to tangible improvements in student outcomes and the overall quality of life in the community.



How Do We Engage In This Work?

ERA.NOVA's Theory of Change Outputs

- **Knowledge Products**
 - Lit reviews, research briefs, practice briefs, reports, guides, toolkits, advocacy tools, panel discussions
- **Professional Development**
 - Leadership academies, workshops, webinars, coaching seminars
- **Action Research Projects**
 - Pilot studies, program evaluation, collaborative diagnostic studies, classroom-based studies

Building Teacher and Leader Capacity



Work Stream 1

Leadership Development

- Principal/Leaders Network
- AI in PK-12 Education (Jan 2025) Convening, Practice Brief



Work Stream 2

Recruitment and Retention

- Special Education Teacher Shortage (Oct. 2024) Convening and Practice Brief



Work Stream 3 Science of Reading/Math teaching and Learning

- VLA Presentation (Spring 2025)
- Secondary Literacy (Mar 2025) Convening

Education Community Well-Being



Work Stream 4

Education Community Well-Being

- Chronic Absenteeism (Fall 2023) Convening, Panel, and Practice Brief

Creating a New Narrative



Work Stream 5

Creating a New Narrative

- Videos

Prioritized ERA.NOVA Workstreams

Dr. Jade Wexler

- Professor of Special Education at the University of Maryland, College Park.
- Area Director of the Special Education program at the University of Maryland
- Associate Director of Research for MILE, the Maryland Initiative for Literacy and Equity
- the [Adolescent Literacy and Professional Development Lab](#)
- AIM Coaching, an adaptive intervention literacy coaching model for middle school instructional leaders (e.g., coaches)
- 55 articles in peer-reviewed journals and is the co-author of three books focused on adolescent literacy



[Link to Presentation](#)

Closing Thoughts

ERA.NOVA Website:

- <https://era.cehd.gmu.edu/>

ERA.NOVA Resources:

- <https://era.cehd.gmu.edu/resources>

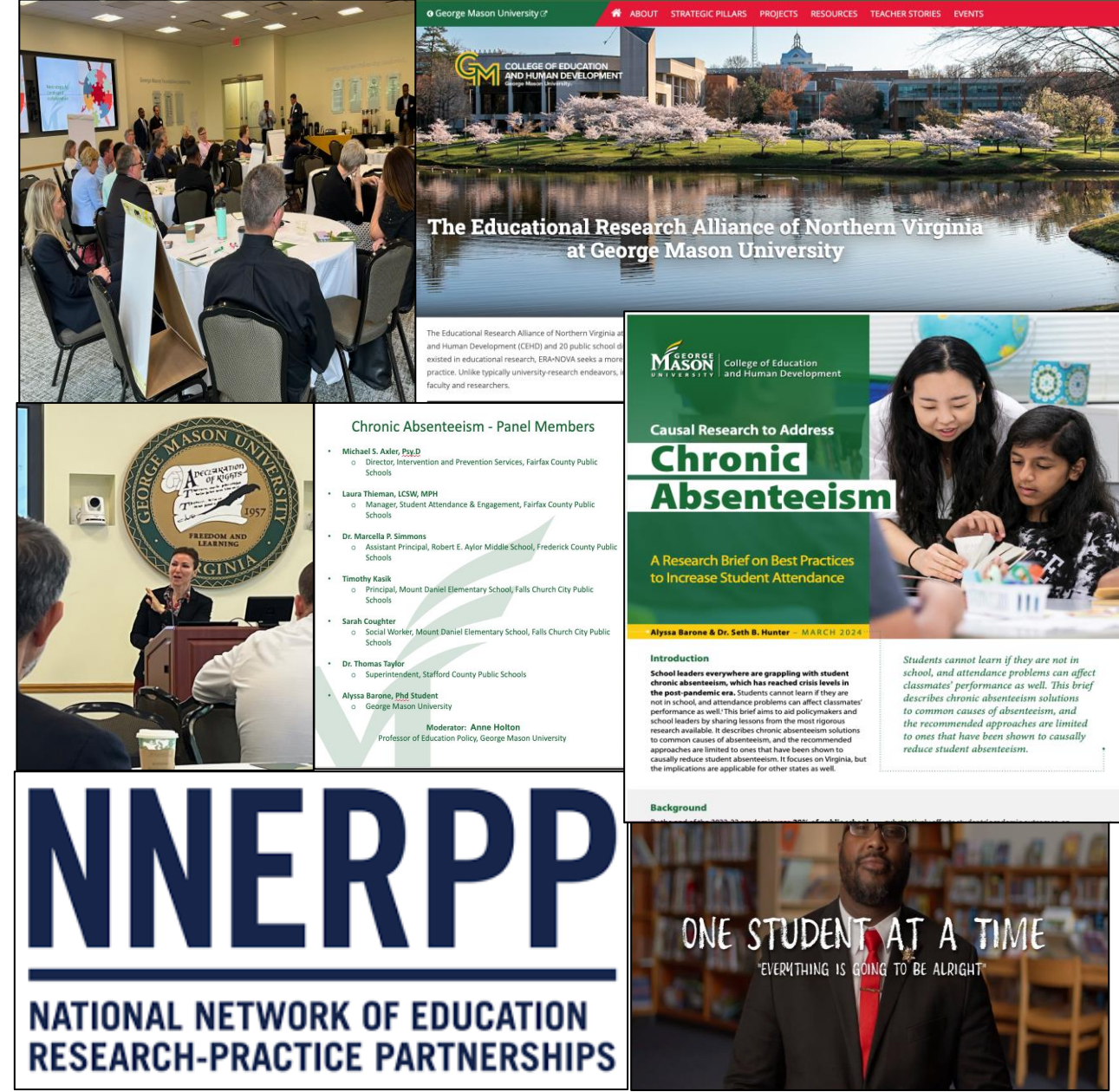
SUPERINTENDENTS MEETING

- June/July 2025 (Date TBD)

TENTATIVE SAVE THE DATES:

- Friday, Oct 17th
- Friday, January 30th
- Thursday, April 9th

POTENTIAL TOPICS: Recruitment and Retention,
Education Community Wellness, Others?





The Educational Research Alliance of Northern Virginia at George Mason University

ERA.NOVA

See you in Fall 2025

